



GRAINKING C O M P A N Y PROFILE 2018

GrainKing Cunderdin Office

Tel: (08) 9365 2360

Email: enquiries@grainking.com.au

Address: 7 West, Main St, Cunderdin WA 6407

Website: www.grainking.com.au

GrainKing Bellevue Office

Tel: (08) 9365 2360

Email: enquiries@grainking.com.au

Address: 21 Clayton St, Bellevue WA 6056

Website: www.grainking.com.au



**THE LEADERS IN FARM
MACHINERY**

**THINKING LIFESTYLE,
THINKING SECURITY,
THINKING INNOVATION**

TABLE OF CONTENTS

TABLE OF CONTENTS

MISSION STATEMENT.....	05
CORE VALUES.....	05
OUR DIFFERENCE.....	05
COMPANY HISTORY.....	05
MANAGEMENT TEAM.....	06
DIVISIONS.....	07
DEALERS.....	07
PRODUCTS.....	08

**DELIVERING
EFFICIENCY FOR
GROWTH**

MISSION STATEMENT

We believe in investing in innovation that delivers efficiency. We are passionate about helping our customers grow.

CORE VALUES

Our core values centre upon our mission statement and belief that customer satisfaction should be achieved above all else.

RESPECT - INTEGRITY - STRENGTH - PASSION - INNOVATION - QUALITY

OUR DIFFERENCE

GrainKing believes in the power of people. From our workshop to our office staff to our distributors and through to our suppliers. We believe it is a combination of effort from individuals that drives the momentum of our company. The driving force behind our core values and mission statement is to achieve excellence in efficiency, growth, and innovation by fostering relationships and personal growth.

COMPANY HISTORY

Established in 1962, GrainKing (formerly known as Trufab Farm Machinery) is a family run business that began by simply doing mechanical repairs. Shortly after GrainKing was established, the opportunity came to begin working with structural steel. This opportunity allowed Trufab to expand and build a large workshop in Perth. Structural steel was the forefront of the young business, however, as the mining boom started Trufab Farm Machinery became involved in large projects all over Western Australia.

In 1982 GrainKing's direction began to focus on the building of grain handling machinery. The GrainKing product line is now among the largest suppliers and manufacturers of grain handling equipment throughout Australia. By using cutting edge technology, high quality materials, and skilled labour our product line maintains a competitive edge over others. We strive to provide our customers with innovative and intelligent solutions to increase their productivity and efficiency.

GrainKing's expansion is the result of the international market demand for our GrainKing and ATE products. GrainKing also specialises in the supply of axles, tracks, and agricultural parts through its division ATE- Axles, Tracks, and Equipment.

What we do

GrainKing believes in the power of people. From our workshop to our office staff to our distributors and through to our suppliers and customers. We believe it is a combination of effort from individuals that drives the momentum of our company. The driving force behind our core values and mission statement is to achieve excellence in efficiency, growth, and innovation by fostering relationships and personal growth.

We understand that the new generation of farmers is starting to take the reins, and we aim to ensure our products meet the latest technology advances. We invest major resources into research and development to bring cutting edge products to the market. Our recent efforts have focused on track bins, dual bins, weigh scales, larger auger systems, and all hydraulic power. You won't want to miss the next step GrainKing is taking. Our 2018 release will be out of this world, and we want you to come along for the ride!

GRAINKING

MANAGEMENT TEAM —



The Trufab Global team is comprised of several diverse individuals from several walks of life with a background heavy in manufacturing, agriculture, and civil works.

MARTIN TREWARN

—
MANAGING DIRECTOR

COLIN JORGENSEN

—
CHIEF EXECUTIVE OFFICER

ADRIAN YEOMANS

—
COMMERCIAL MANAGER

VINCE TREWARN

—
GROUP DIRECTOR

LENNY TREWARN

—
GROUP DIRECTOR

PETER WILLIAMS

—
CHAIRMAN OF THE
ADVISORY BOARD

DIVISIONS

NYREX

Grain King is among the largest manufacturers of grain handling equipment in Australia with a range that include chaser bins, seed super bins, dual / multi bins, field bins, and chaff carts. The range is the result of decades of experience combined with a vision to drive efficiency and innovation.

Grain King is constantly innovating the range to stay up to speed with farming advances, including tramline tops to address CTF restrictions.

ATE

ATE or Axles - Tracks - Equipment acts as a distributor for agricultural axles and tracks along with wholesale supply of various parts and equipment used in machinery manufacturing. We supply several OEM's with our imported European axles and foster these relationships to further supply other products in the range.

TRUCHASER

While Grainking is passionate about innovation and improving our products, we also recognise the financial struggle many Aussie farmers go through. We aim to create high quality and reliable products that are affordable for everyone through our Truchaser range.

DEALERS



PRODUCTS

NYREX

QUALITY REPUTATION

GrainKing Chaser Bins have a high resale value due to their reputation for exceptional quality and their ability to stand up to decades of wear and tear in the harshest environments. The original GrainKing customers from the early 80's now find themselves trading out of their bins at values that exceeded their original purchase price.



The Nyrex Chaser Bin come standard with a 22" auger. With a discharge rate of 16 tonnes per minute this will improve your efficiency in the field. With hydraulic adjustable auger covers fitted as standard, the discharge rate can be adjusted suiting every need.

We are excited to have engineered a Chaser Bin with a modular design, allowing easier access for transport both within Australia, and across the globe. This modular system will allow for simple on-site maintenance and upkeep of your Chaser Bin over the years, and as your harvest program increased you will now have the option of increasing the capacity of your bin.



The Nyrex Chaser Bin has been manufactured with Strenx high tensile structural steel, developed in Sweden and processed in Western Australia, making it one of the lightest bins on the market. Our smart construction is designed to withstand decades of wear and tear with the lightest materials possible. A light bin means savings on fuel and less ground pressure on your paddocks, even when the bin is filled to its maximum capacity. The Strenx steel has lightened the load by approx. 700kg, making your bin a much more reliable and durable product.

The Huck BOM (blind, oversize mechanically locked) bolt has been designed with a vibration resistant fastener with a unique push and pull installation, making this fastening system tough enough for military vehicles and equipment. We believe that the Huck Bolt, being good enough for the military, is definitely good enough for your paddock.

The Grain King range of Field Bins is the result of decades of experience combined with a vision to drive efficiency and innovation. We deliver a top of the line paddock solution, while upholding a global reputation for quality and integrity. For over three decades Grain King Field Bins have been the first choice for Australian farmers in sizes of 85t-125t. The reliability and value behind each bin proves itself time and time again. Grain King Field Bins are hand crafted with a sturdy construction and a two pack epoxy paint finish, ensuring that your machine has been built to last.



- ✓ Heavy duty custom built axles
- ✓ Industry leading quality and reliability
- ✓ Unique hydraulic folding and over-centre locking auger mechanism
- ✓ Decades of experience for a superior buildauger mechanism



The GrainKing range of Seed and Super Bins are the ultimate seeding solution for a fast fill time and zero contamination. These bins are the result of decades of experience combined with a vision to drive efficiency and innovation. We deliver top of the line paddock solution, while upholding a global reputation for quality and integrity. There is sure to be a product which suits your needs with 30 to 35 ton Seed and Super Bin sizes and a 45ton Triple Bin, plus several axle, track, and tyre options available. The GrainKing team aims to deliver the ultimate safe, versatile, and durable machine to our customers.



The Seed and Super Bin is designed with two equal sized bins and dual augers with unloading capacity up to 7 ton per minute. The seeding unit is designed for minimal contamination and maximum efficiency. GrainKing Seed and Super Bins come standard with features that make operating efficient, safe, and convenient. All bins are equipped as standard with a hand held wireless remote for the hydraulic sweep augers and heavy duty braked axles, because reliability and safety are a top priority. Our bins are built to withstand the harshest environments with heavy duty materials and ingenious design. The bins can be used at seed and harvest time, as well as through out the year for mixing grain into sheep feeders.

Seed and Super Bins for the future, manufactured today

- ☑ Innovative design for multiseason use
- ☑ Dual compartments and augers for zero contamination
- ☑ Increased efficiency with faster fills at seeding
- ☑ Decades of experience for a superior build



The Grain King range of Multi Bin's are the perfect affordable solution for the farmer looking for a machine to be used multiple time throughout the year. There is sure to be a product which suits your needs with 18 to 30 ton bin sizes, plus several axle, track, and tyre options available. The Grain King team aims to deliver the ultimate safe, versatile, and durable machine to our customer.



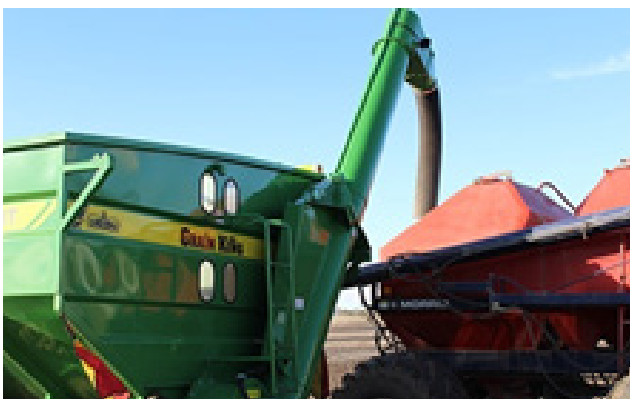
GrainKing Multi Bins are outfitted to ensure a safe seeding and harvest. All bins are standardly equipped with heavy duty braked axles, because reliability and safety are a top priority. Our bins are built to withstand the harshest environments with heavy duty materials and ingenious design.

Multi Bins made for the future, manufactured today.

team aims to deliver the ultimate safe, versatile, and durable machine to our customer.

Multi Bins made for the future, manufactured today.

- ☑ Innovative design for multiseason use
- ☑ Unique braked axle for superior operator safety
- ☑ Low centre of gravity for unparalleled stability
- ☑ Decades of experience for a superior build



GRAINKING

**DRIVING EFFICIENCY
FOR GROWTH**

**WE BELIEVE IN INVESTING IN
INNOVATION THAT DELIVERS
EFFICIENCY**

**WE ARE PASSIONATE ABOUT
HELPING OUR
CUSTOMER GROWTH**

